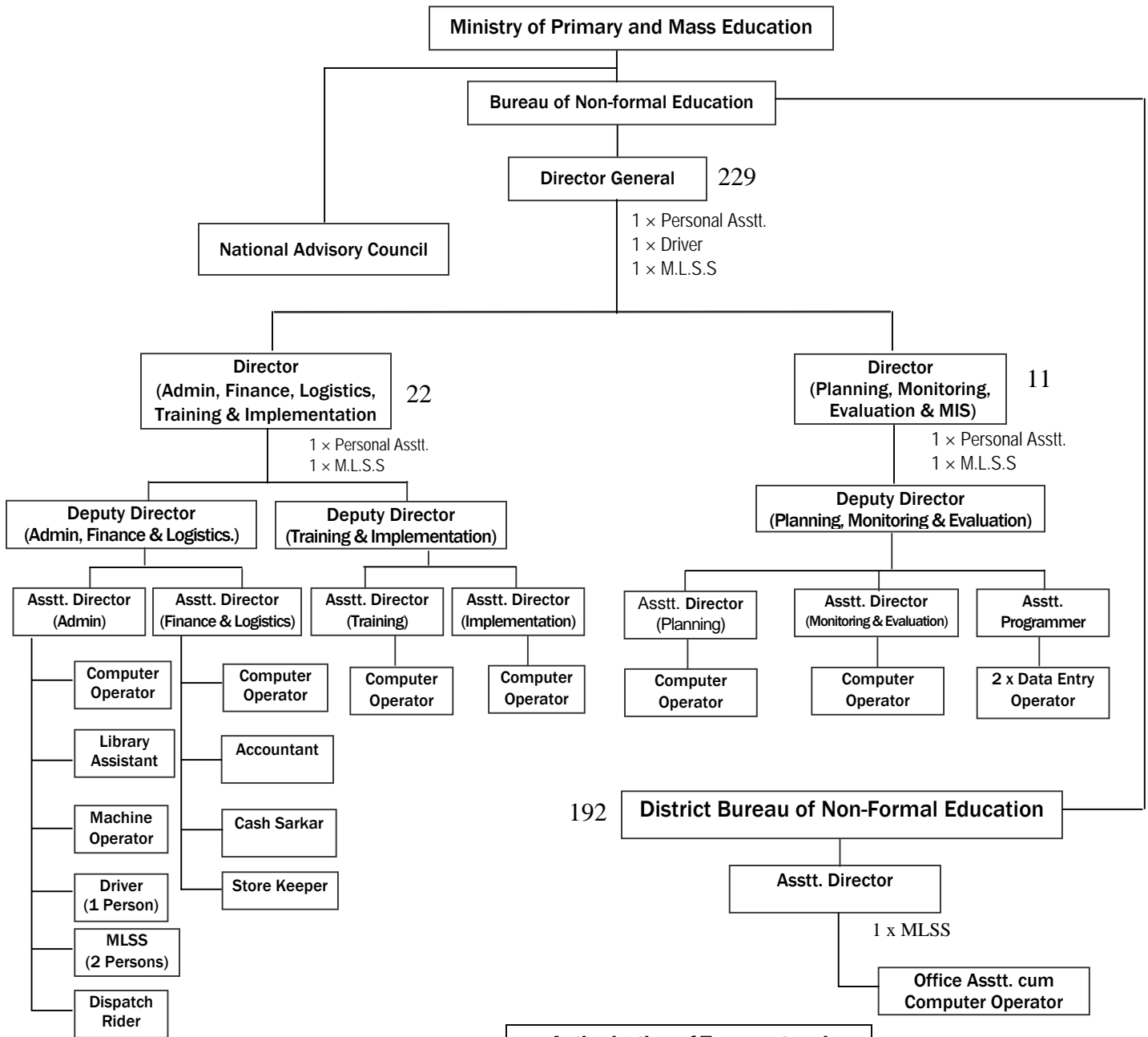


WORKING ORGANOGRAM OF BNFE



Summary of Manpower

Bureau of Non-Formal Education	
1st Class Post	
Director General	01
Director	02
Deputy Director	03
Assistant Programmer	01
Assistant Director	06
Class I Post	13
Class III Post	17
Class IV Post	07
Total Post	37
District Bureau of Non-Formal Education	
Class I Post	
Assistant Director	01 x 64 = 64
Class III Post	
Office Asstt. cum Computer Operator	01 x 64 = 64
Class IV Post	
MLSS	01 x 64 = 64
Grand Total	229

Authorization of Transport and

Bureau of Non-Formal Education	
Transport	
Jeep	- 1
Micro Bus	- 1
Equipment	
Computer	- 12
Laser Printer (Large)	- 2
Laser Printer (Small)	- 9
Dot Printer	- 1
Air Conditioner (Split Type)	- 3
Photocopiers (Large)	- 1
Photocopiers (Small)	- 1
Fax Machine	- 1
Telephone	- 13

District Bureau of Non-Formal Education	
Transport	
Motor Cycle	- 64
Equipment	
Computer	- 64
Laser Printer (Small)	- 64
Telephone	- 64